

- ELDRIDGE, W. D., W. I. BUTLER JR., AND R. J. KING. 1990. Expanded aerial breeding pair surveys for ducks in the Yukon Delta National Wildlife Refuge. Unpub. Progress Report. U.S. Fish and Wildlife Service, Anchorage, AK
- ELY, C. R. 1979. Breeding biology of white-fronted geese. M. S. thesis, Univ. Calif., Davis. 110 pp.
- HANDEL, C. M., AND R. E. GILL, JR. 1986. Arctic geese during brood rearing on the central Yukon-Kuskokwim Delta: analysis of patterns of distribution. Unpub. Report. U. S. Fish and Wildlife Service, Anchorage, AK
- KING, J. G. 1973. A cosmopolitan duck moulting resort; Takslesluk Lake Alaska. Wildfowl 24:103-109.
- KIRCHOFF, M. D. 1978. Distribution and habitat relations of pintails on the coast of the Yukon Delta, Alaska. M. S. thesis, Univ. Maine, Orono. 45 pp.
- LENSINK, C. J., AND T. C. ROTHE. 1986. Value of Alaskan wetlands for waterfowl. Unpub. Report. U. S. Fish and Wildlife Service, Anchorage, AK
- MICKELSON, P. G. 1975. Breeding biology of cackling geese and associated species on the Yukon-Kuskokwim Delta, Alaska. Wildl. Monogr. 45:1-35.
- PLATTE, R. M. AND W. I. BUTLER JR. 1992. Aerial surveys and mapping of waterbird distribution and abundance for impact assessment of potential oil development on Yukon Flats National Wildlife Refuge, Alaska. Unpub. Report. U.S. Fish and Wildlife Service, Anchorage, AK
- SEDINGER, J. S., C. J. LENSINK, D. H. WARD, R. M. ANTHONY, M. L. WEGE, AND G. V. BYRD. 1993. Current status and recent dynamics of the black brant breeding population. Wildfowl 44 In Press
- SPENCER, D. L., U. C. NELSON, AND W. A. ELKINS. 1951. America's greatest goose-brant nesting area. Trans. N. Amer. Wildl. Conf. 16:290-295.
- STEHN, R. A. 1991. Nesting populations and production of geese on the Yukon-Kuskowkim Delta. Unpubl. Report. U. S. Fish and Wildlife Service, Anchorage, AK
- TANDE, G. F. AND T. W. JENNINGS. 1986. Classification and mapping of tundra near Hazen Bay, Yukon Delta National Wildlife Refuge, Alaska. Unpub. Report. U. S. Fish and Wildlife Service, Anchorage, AK
- THORSTEINSON, L. K., P. R. BECKER, AND D. A. HALE. 1989. The Yukon Delta a synthesis of information. Special Report. NOAA/National Ocean Service, Ocean Assessments Division, Anchorage, AK

- U.S. FISH AND WILDLIFE SERVICE AND CANADIAN WILDLIFE SERVICE. 1987. Standard operating procedures for aerial breeding ground population and habitat surveys in North America. Unpub. manual. U.S. Fish and Wildl. Serv., Can. Wildl. Serv., Laurel MD.
- U.S. FISH AND WILDLIFE SERVICE, 1988. Yukon Delta National Wildlife Refuge final comprehensive conservation plan, environmental impact statement, and wilderness review. U.S. Fish and Wildlife Service, Anchorage, AK
- WOLFE, R. J. 1981. Norton Sound/Yukon Delta sociocultural systems baseline analysis. U. S. Dep. Inter., Bur. Land Manage., Alaska OCS Socioeconomic Studies Program, Tech. Report. 72. 270pp.

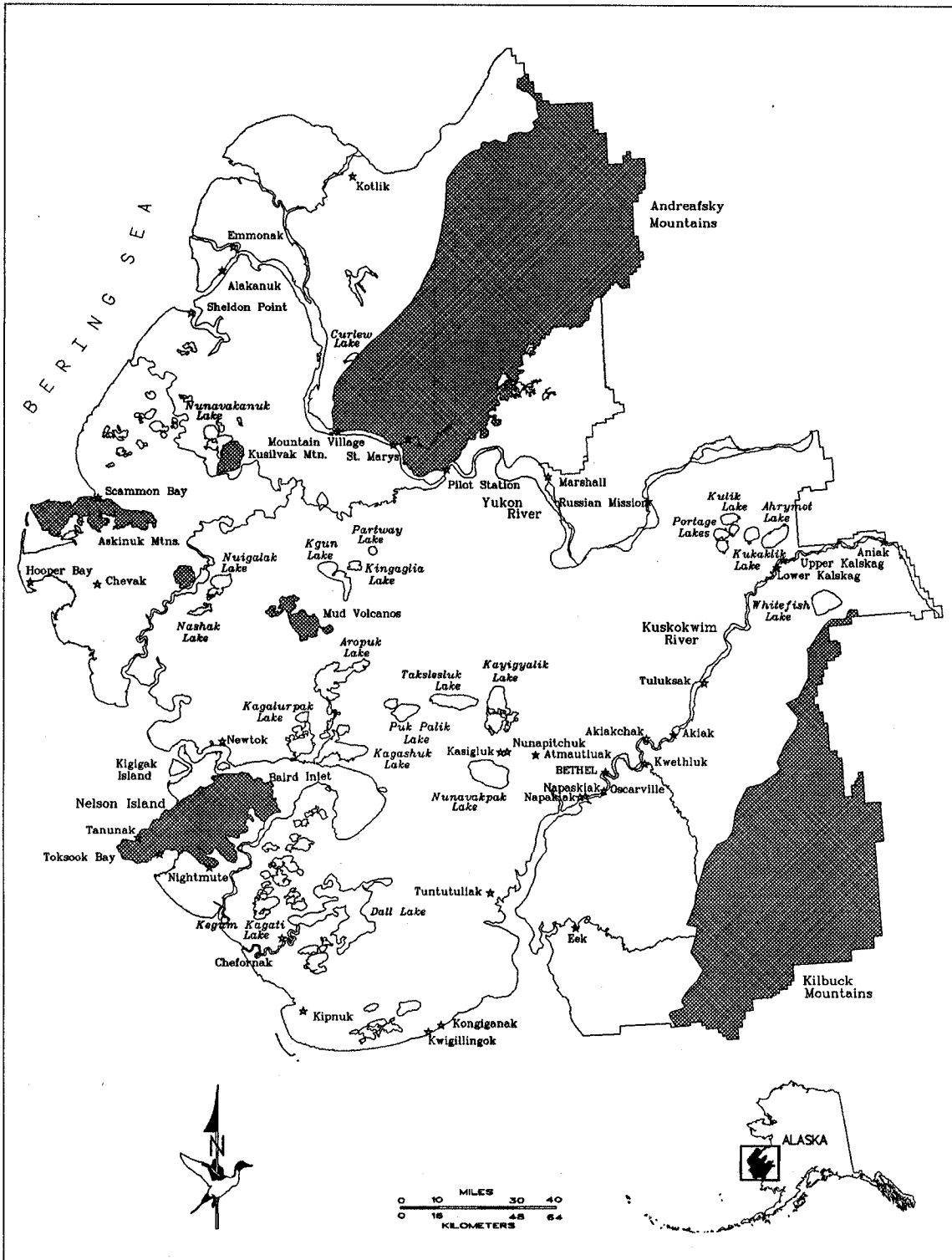


Figure 1. Geographic features of Yukon Delta National Wildlife Refuge, Alaska.

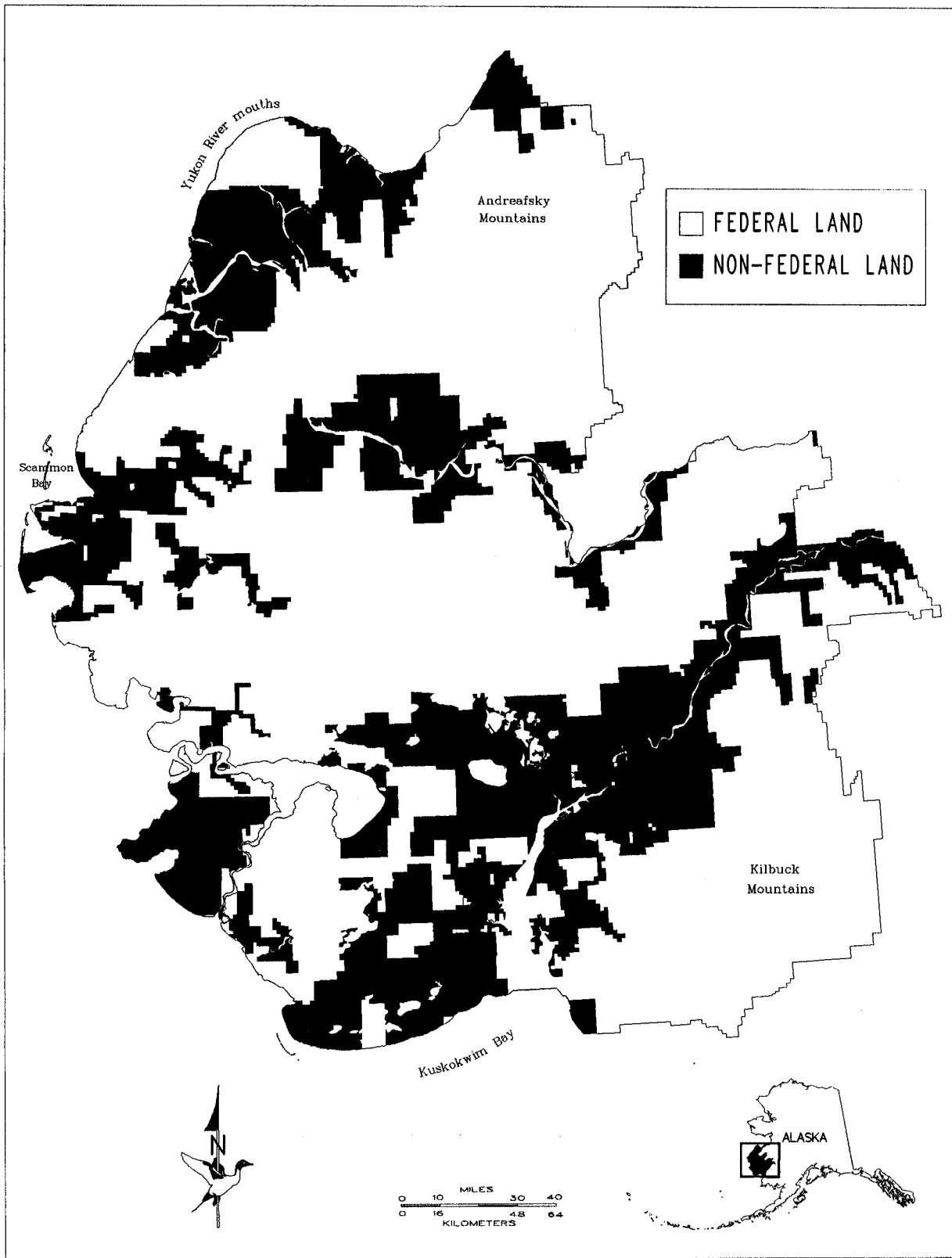


Figure 2. Location of federal and non-federal land on Yukon Delta National Wildlife Refuge, Alaska.

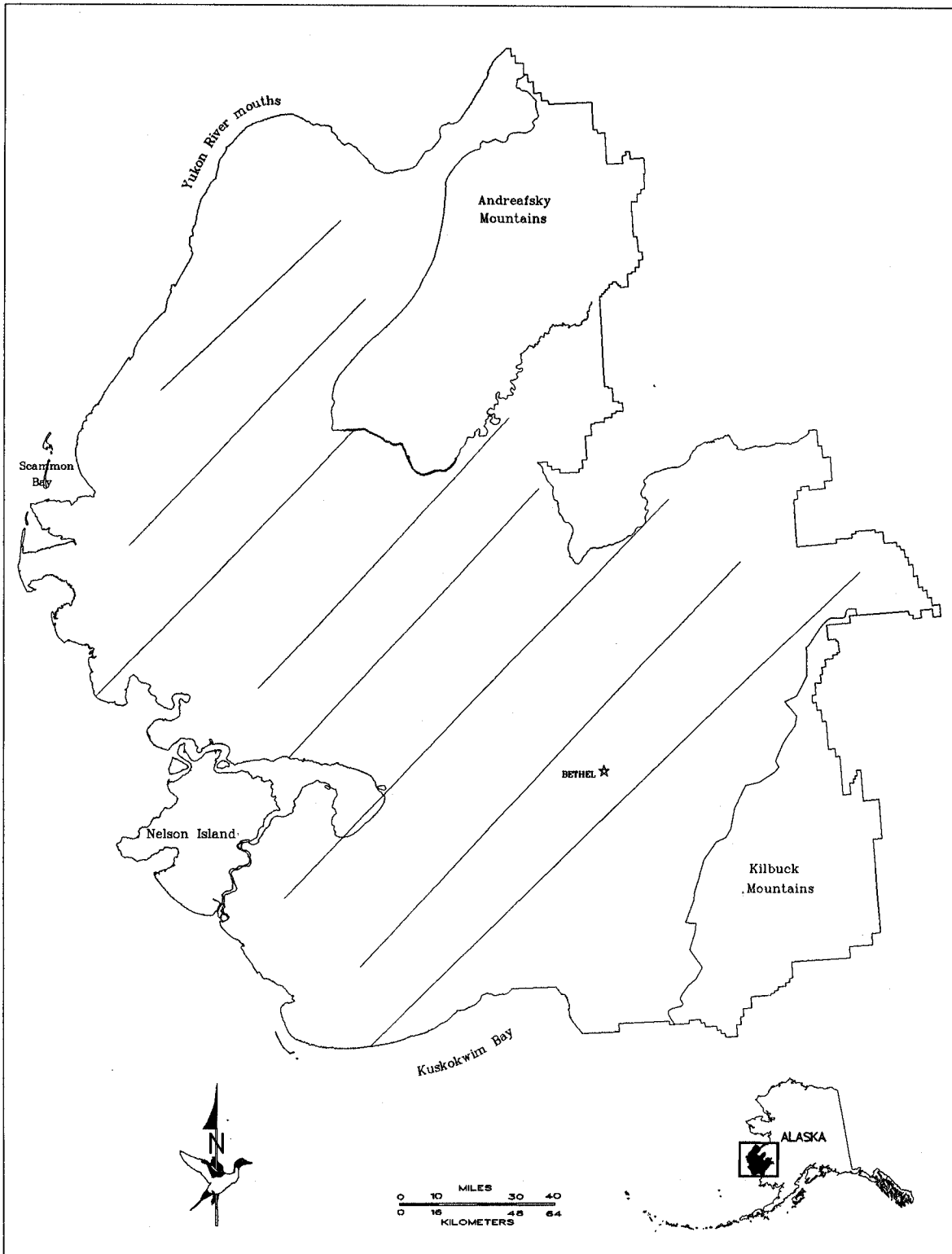


Figure 3. North American Waterfowl Breeding Population Survey transects for stratum 9 on Yukon Delta National Wildlife Refuge, Alaska.

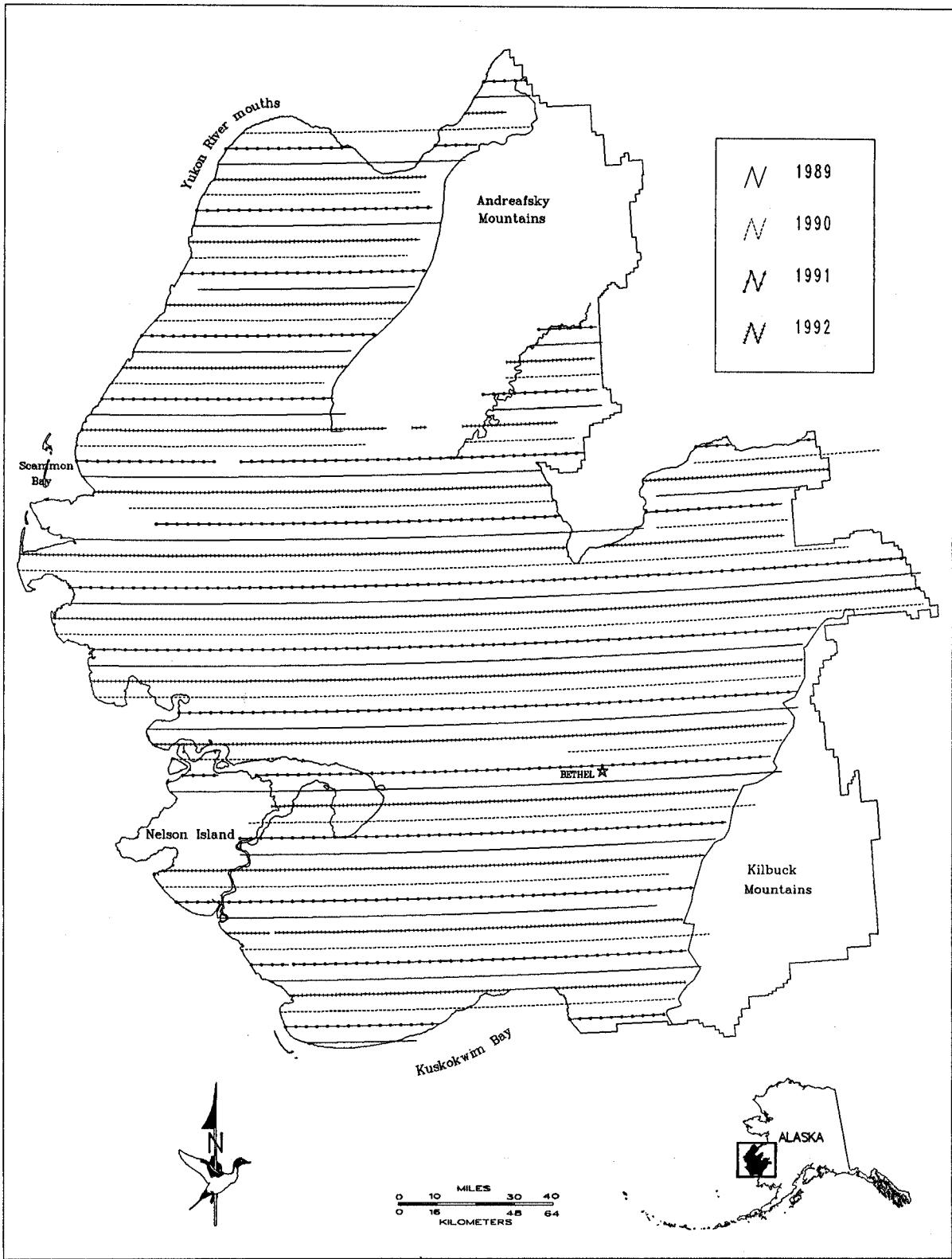


Figure 4. Expanded breeding population survey transects flown in June 1989-1992 on Yukon Delta National Wildlife Refuge, Alaska.

